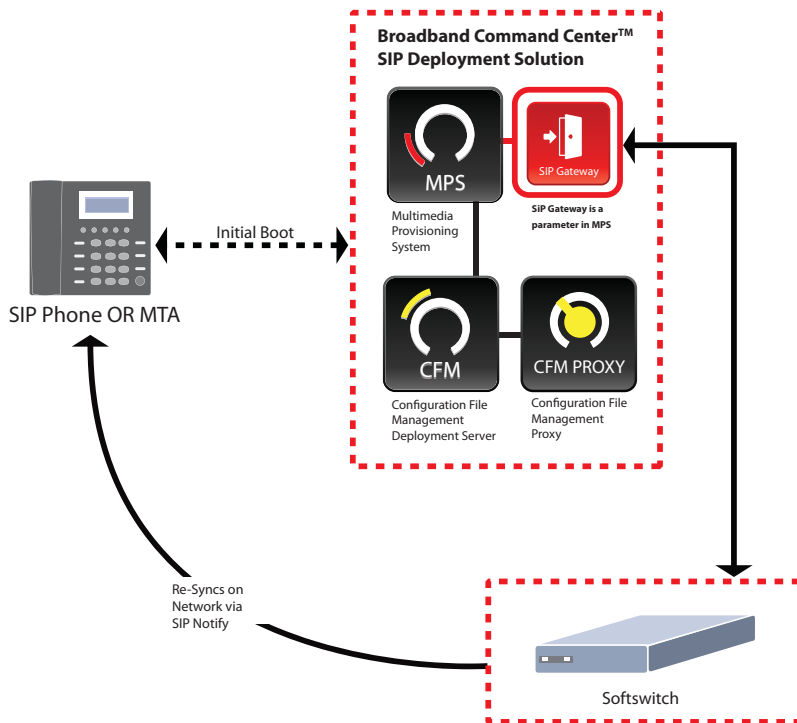


# DATASHEET

# Broadband Command Center SIP Deployment Solution

## Product Overview

SIP Deployment Solution™ (SDS) is a carrier-grade automated VoIP deployment solution that securely provisions multi-vendor SIP-based phones and ATAs for hosted service providers and enterprise networks. The provisioning solution is an extension to Incognito's Broadband Command Center™ platform that currently provision over 30 million devices worldwide.



Incognito's SIP Deployment Solution interfaces with application feature servers to provide carrier-grade, feature-rich, web services-enabled capabilities for converged experiences for businesses. The interface allows Synergy to update the SIP Deployment Solution with subscriber and phone information entered into the Synergy Multiplay Platform. The integrated solutions offer rich, hosted IP communication services across fixed, mobile and cable networks, and provide service providers with competitive edge by accurately and quickly provisioning a bundle of services. This product is typically sold as a bundled solution through an application feature server provider and includes an extensive development toolkit that can be adapted to fulfill the needs of any VoIP environment.

## Benefits

### Multi-Vendor Flexibility

SIP provisioning methods vary by vendor, requiring your provisioning system to address the individual requirements specific to a vendor and be flexible to support

## HIGHLIGHTS

- Deployment of SIP business phones and ATAs to the end-user with ZERO to minimal touch
- Centralized and dynamic configuration, assignment and management of features to a specific SIP phone
- Dynamic (on-the-fly) generation and optional encryption of configuration TFTP/HTTP(S)/FTP files eliminating time-consuming and error-prone manual processes
- Support for the widest range of leading SIP business phones and ATAs in the industry
- Industry-leading failover system and carrier-grade scalability to expand as your subscriber base grows
- Comprehensive security model that allows the delegation of administration, device, inventory assignment and call feature management
- Web Services APIs that allow integration with OSS/BSS, Application Feature Server and other 3rd party platforms
- Multi-server platform support: Windows, Linux/Debian, Solaris

# DATASHEET

the different devices. Incognito's SIP Deployment Solution supports the widest range of SIP devices in the industry so you can seamlessly provision devices from multiple vendors. Provisioning various SIP devices is simple with Incognito's easy-to-use multivendor templates.

## Seamless Device Setup and Grouping

Implementing your SIP device is easy with comprehensive, device specific setup that includes the model, MAC address, service classes, privacy encryption key, and proxy, as well as phone-line data such as name, password, phone number and caller ID.

Your devices can be grouped into service classes, as defined by the SIP feature sets.

## Automated Provisioning: Implementation Settings

When SIP endpoints are configured manually, volume rollout to enterprises is expensive and labor intensive. SIP Deployment Server automatically configures all SIP devices on your network with carrier-grade performance, industry-leading failover systems and reliability. Incognito also customizes activation based on predefined criteria for large populations.

## Granular Configuration and Hierarchical Management

Once a VoIP phone or endpoint is deployed, configuring preferences and making further changes require administrator intervention, which further adds to the labor costs. With Incognito's SIP Deployment Solution, configuration changes can be done at the group or individual level through the use of Incognito's templating features and hierarchical security model.

## Specifications

### MINIMUM SERVER AND OPERATING SYSTEM REQUIREMENTS

- CPU\*: Pentium® 4 - 2.8 GHz, UltraSPARC-IIi Processor at 650 MH\*, RAM\*: 512 MB, Disk Space\*: 10 GB
- Operating Systems\*\*: Windows 2003, Debian Etch (4.0), Solaris 9, 10 (Sparc), Solaris 10 (Intel)1, Redhat RHEL5 (5.1)2

\* Server requirements are dependent on customer deployment size. Specs are for deployments under 10,000 devices  
 \*\* Please refer to product release notes for the most up-to-date information. Note that the hardware processing power influences overall system performance.  
 1 Solaris 10 containers are not supported.  
 2 Red Hat Linux threading models are not supported.

### SPECIFICATIONS

SIP Deployment Server includes the following components:

- Configuration File Management (CFM)  
The CFM Service dynamically generates SIP configuration files or returns static files.
- Configuration File Manager Proxy  
The CFM Proxy receives the client configuration file requests over TFTP, HTTP(S), or FTP, and in turn retrieves the requested files from the CFM service. It enables the load balancing of CFM services and delivers scalable transfer of device configuration files.
- Multimedia Provisioning Service (MPS)  
The MPS is the central subscriber provisioning point - all subscriber, device, and associated configuration data resides in the MPS. OSS integration is done through the MPS.

### SYSTEM INTEGRATION AND PROTOCOL SUPPORT

- Web Service API: CORBA/SOAP APIs and Command Line Interface (CLI)
- Optional integration with Incognito's Broadband Command Center™ DHCP Service
- Device-specific setup including model, MAC address, service classes, privacy encryption key, proxy, as well as phone line data such as name, password, phone number, and caller ID
- Service class defined by SIP feature sets: proprietary SIP objects and standard or proprietary MIB (Management Information Database) objects
- Comprehensive search capabilities for lookup by name, description, account ID, and device MAC address
- Customizable MIB "group" views for device types; only those MIBs supported by each device are visible